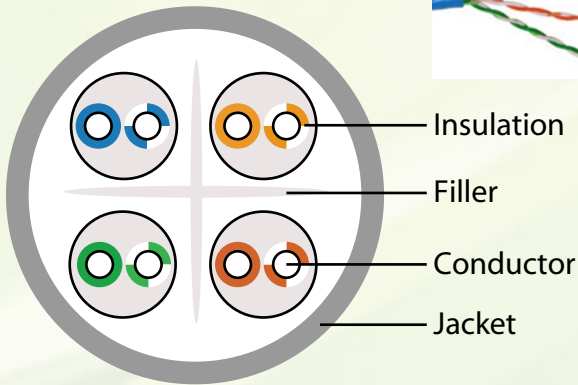
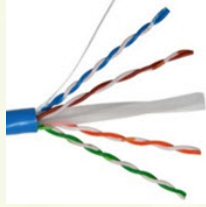


Category 6 UTP Cable - Solid

TTECH Category 6 Cable provides performance exceed Cat 6 specifications up to 250 MHz
It achieves stable impedance when matching with other TTECH Cat 6 accessories.



Applications

- 100BASE-T Ethernet (IEEE802.3)
- 100 Mbps TP-PMD
- Gigabit Ethernet
- 155/622Mbps 1.2/2.4 Gbps ATM
- 16Mbps Token Ring (IEEE802.5)
- ISDN
- Analog (broadband & baseband & Digital Video)
- Analog & Digital (VoIP) Voice

Specifications

- UL verified to TIA/EIA 568A & ISO/IEC11801
- Conductor: 23AWG (1x0.56±0.007mm) solid anneal copper wire
- Core diameter : 0.565mm
- Insulation material: Colour coded HDPE
- Diameter of dielectric core: 1.0±0.05mm
- Insulation thickness: minimum at any point: 0.22mm
- Jacket:PVC or LSZH
- Thickness of jacket: AVG 0.6mm
- Nominal O.D.: 6.4±0.2mm
- Flammability Grade : CM
- Performance : Exceed Cat 6 specification 250MHz
- Color: Grey, Blue & customized colour

Electrical Characteristics

Frequency (MHz)	Attenuation Max dB/100M	Next dB/100M	Power Sum Min. dB/100M	ELFEXT dB/100M	Return Loss dB
1	2.0	74.3	72.3	67.8	20
4	3.8	65.3	63.3	55.8	23
10	6.0	59.3	57.3	47.8	24.5
16	7.6	56.2	54.2	43.7	25
20	8.5	54.8	52.8	41.8	25
31.25	10.7	51.9	49.9	37.9	24.2
62.5	15.4	47.4	45.4	31.9	21.5
100	19.8	44.3	42.3	27.8	20.1
200	29.0	39.8	37.8	21.8	18
250	32.8	38.3	36.3	19.8	17.3

Ordering Information

Description	Part Number
TTECH UTP Cat 6 4 Pair Solid Cable (Grey)	TTSC-6IU1-GR
TTECH UTP Cat 6 4 Pair Solid Cable (Blue)	TTSC-6IU1-BL